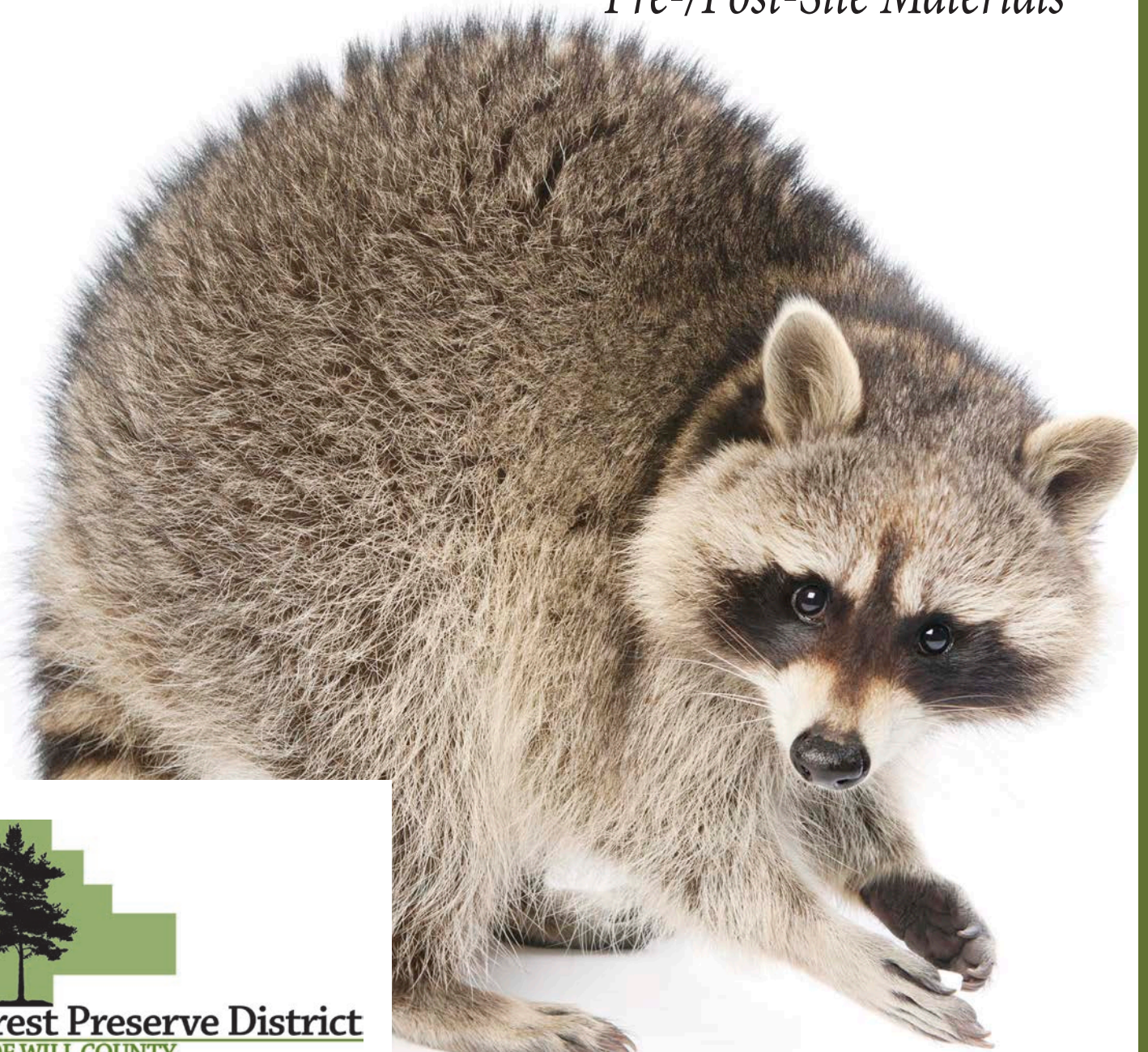


Illinois Mammals

Pre-/Post-Site Materials



Forest Preserve District
OF WILL COUNTY

Bringing People and Nature Together

Table of Contents

In-School Program

Glossary of Terms.....2
Jackie Glassman

Recommended Readings, Videos and Websites.....2
Various Sources

Animal Classes Matching Worksheet.....3
Forest Preserve District of Will County

Mystery Mammal Game.....4
Forest Preserve District of Will County

Mammal and Animal Classification Quizzes.....5-7
Forest Preserve District of Will County

Photos: Mammals of All Types!.....8-12
Photos via Wikimedia Commons



Correlated State Standards

Identified ELA, Math and Science Standards are detailed below specific to this education program.

Source: Forest Preserve District of Will County, the Council of Chief State School Officers (Common Core), and the National Research Council (Next Generation Science Standards)

ELA Standards

Subject Codes	Grade 4	Grade 5	Grade 6
Reading for Information (RI)	RI.4.3, RI.4.4	RI.5.3, RI.5.4	RI.6.7
Language (L)	L.4.4, L.4.6	L.5.4, L.5.6	L.6.4, L.6.6
Speaking and Listening (SL)	SL.4.2	SL.5.2	SL.6.2

NGSS Standards

Disciplinary Idea	Grade 4
Life Science 1, Structures and Process (LS)	4-LS1-1, 4-LS1-2



References

Glossary of Terms

Herbivore: A plant-eating animal.

Mammal: Any of a class (Mammalia) of warm blooded, higher vertebrates that nourish their young with milk secreted by mammary glands and have skin usually more or less covered with hair.

Predator: An animal that catches and kills other animals for food.

Vertebrate: Having a spinal column.

Warm-blooded: Having a relatively high and constant body temperature usually independent of the surroundings.

Recommended Books

Parker, Steve. "Mammal." DK Eyewitness Books. August 2004.

Sill, Cathryn P. & Sill, John. "About Mammals: A Guide for Children." March 2000.

Mobi Reference. "The Illustrated Encyclopedia of North American Mammals: A Comprehensive Guide to Mammals of North America." April 2008.

Attenborough, David. "The Life of Mammals." October 2002.

Snedden, Robert. "What is a Mammal?" October 1997.

Kalman, Bobbie & Lundbald, Kristina. "Animals Called Mammals." March 2005.

Dudley, Karen & Steck-Vaughn, Raintree. "Elephants." 1997.

Cerullo, Mary M. "Dolphins: What They Can Teach Us." Dutton Children's Books. 1999.

Recommended Videos

"The Life of Mammals." 2002-2003.

"Eyewitness: Mammal." 2007.

"Wild Secrets: Sea and Land Mammals." 2009.

"Ultimate Wildlife: Mammals." 2011.

"Mutual of Omaha's Wild Kingdom: Mammals of North America." 2005.

"Bill Nye the Science Guy: Mammals Classroom Edition." 2008.

"Jim Knox's Wild Zoofari – Marine Mammals and Friends." 2008.

Recommended Websites

All About Mammals

<http://www.zoomwhales.com/subjects/mammals/>

Marine Mammals

<http://netvet.wustl.edu/marine.htm>

Images of Mammals: The Photography of Wernher Krutein

[https://photovault.com / search?search=mammals&f=0&aid=0&page=1](https://photovault.com/search?search=mammals&f=0&aid=0&page=1)

Mammals

<http://www.angelfire.com/mo2/animals1/mammal/mammal.html>



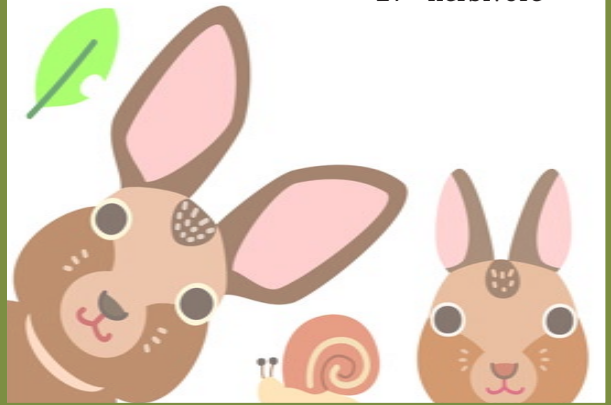
Activities

Mystery Mammal Game

1. Invite students to choose a mammal they would like to learn more about. They should not share their choice with anyone but you. Make sure that each student is researching a different animal.
2. Give each student an index card. Have each student research his or her assigned mammal using print and online resources. As the children research their mammals, instruct them to write 8-10 clues about their animals on the index cards. For example, "It has a heavy fur coat to keep warm" or "It hibernates in the winter."
3. When students have completed their research, invite each student to present a clue and allow the rest of the class to guess the animal. The presenter can give clues until the audience has guessed the mammal. Once the mammal is revealed, the presenter should share the rest of the clues and any other information learned about the mammal.

Animal Classes: Matching (Answer Key)

9 - food chain	2 - crustaceans
4 - reptile	16 - amphibians
6 - insects	10 - mollusks
14 - extinction	7 - fish
1 - to look threatening	15 - Australia
12 - mammals	5 - drone
8 - birds	11 - workers
	13 - queen
	3 - carnivore
	17 - herbivore



Did You Know?

- Most mammals are herbivores; that is, they eat only plants.
- All mammals are vertebrates; they have an internal skeleton with a central backbone.
- Most mammals can be active even in cold weather because they are warm blooded.
- The weasel is an agile predator that can kill its prey in one quick bite.
- Some mammals, such as chimpanzees, dolphins and human beings, are highly intelligent.

Name: _____

Quiz: Mammals

Select the correct answer from the choices listed.

1. Which of these animals is a mammal?

- ☐ Fish
- ☐ Spider
- ☐ Dog

2. Which of these animals is NOT a mammal?

- ☐ Cat
- ☐ Cow
- ☐ Bird

3. Most mammals lay eggs.

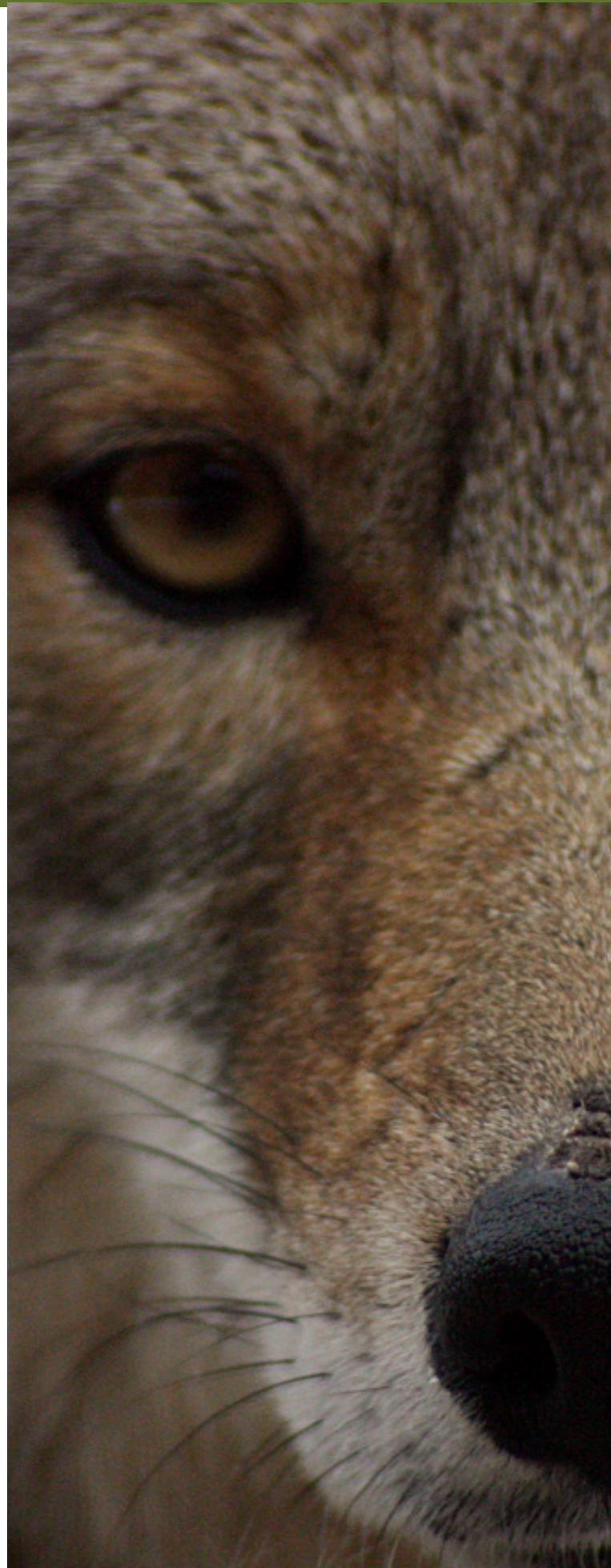
- ☐ True
- ☐ False

4. A mammal breathes air.

- ☐ True
- ☐ False

5. This mammal lives in the water.

- ☐ Whale
- ☐ Jellyfish
- ☐ Eel





Name: _____

Quiz: Animal Classification

Select the correct answer from the choices listed.

1. An oyster is a member of which invertebrate family?

- ☐ Crustaceans
- ☐ Mollusks
- ☐ Insects
- ☐ Arachnids

2. A whale is a member of which vertebrate family?

- ☐ Fish
- ☐ Mammals
- ☐ Reptiles
- ☐ Crustaceans

3. An elephant is a member of which vertebrate family?

- ☐ Amphibians
- ☐ Mammals
- ☐ Reptiles
- ☐ Birds

4. A boa constrictor is a member of which vertebrate family?

- ☐ Mammals
- ☐ Reptiles
- ☐ Arachnids
- ☐ Mollusks

5. A scorpion is a member of which invertebrate family?

- ☐ Mammals
- ☐ Insects
- ☐ Arachnids
- ☐ Crustaceans

Answer Key

Quiz: Mammals

Grade Level: 4/5

1. Which of these animals is a mammal?

- ☐ Fish
- ☐ Spider
- ☒ Dog

2. Which of these animals is NOT a mammal?

- ☐ Cat
- ☐ Cow
- ☒ Bird

3. Most mammals lay eggs.

- ☐ True
- ☒ False

4. A mammal breathes air.

- ☒ True
- ☐ False

5. This mammal lives in the water.

- ☒ Whale
- ☐ Jellyfish
- ☐ Eel

Animal Classification

Grade Level: 4/5

1. An oyster is a member of which invertebrate family?

- ☐ Crustaceans
- ☒ Mollusks
- ☐ Insects
- ☐ Arachnids

2. A whale is a member of which vertebrate family?

- ☐ Fish
- ☒ Mammals
- ☐ Reptiles
- ☐ Crustaceans

3. An elephant is a member of which vertebrate family?

- ☐ Amphibians
- ☒ Mammals
- ☐ Reptiles
- ☐ Birds

4. A boa constrictor is a member of which vertebrate family?

- ☐ Mammals
- ☒ Reptiles
- ☐ Arachnids
- ☐ Mollusks

5. A scorpion is a member of which invertebrate family?

- ☐ Mammals
- ☐ Insects
- ☒ Arachnids
- ☐ Crustaceans

Photos: Mammals of All Types!

Egg-laying



Platypus

Flying



Bat

Toothless



Pouched

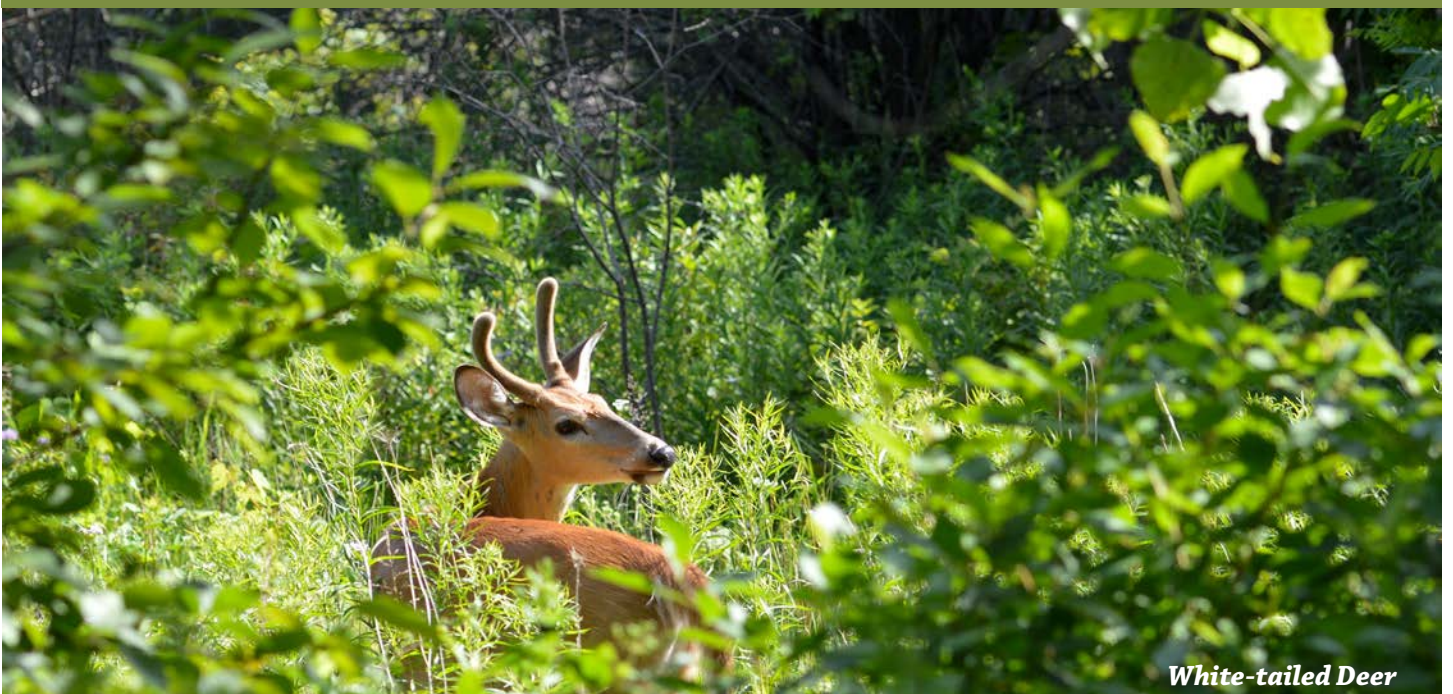


Meat-eating



Coyote

Hoofed



White-tailed Deer

Trunk-nosed



Insect-eating



Rodent



Marine



Primate





Forest Preserve District

OF WILL COUNTY

Bringing People and Nature Together

ReconnectWithNature.org