



Forest Preserve District of Will County

WOODS WALK

September 1 – November 30

2025 Hiking Guide

Visitor Centers

Four Rivers Environmental Education Center • 815-722-9470

25055 W. Walnut Lane, Channahon

Hours: Wednesday-Sunday 10 a.m.-4 p.m., Closed Monday & Tuesday

Hidden Oaks Nature Center • 815-722-4121

419 Trout Farm Road, Bolingbrook

Hours: Wednesday-Sunday 10 a.m.-4 p.m., Closed Monday & Tuesday

Isle a la Cache Museum • 815-722-9301

501 E. 135th Street, Romeoville

Hours: Wednesday-Sunday 10 a.m.-4 p.m., Closed Monday & Tuesday

Monee Reservoir • 815-722-9303

27341 Ridgeland Avenue, Monee Township

Hours: Tuesday-Sunday, March: 8 a.m.-4 p.m., April: 7 a.m.-6 p.m.,

May-August: 6 a.m.-7 p.m., September: 7 a.m.-6 p.m.,

October: 8 a.m.-4 p.m., November-February: Closed

Plum Creek Nature Center • 708-946-2216

27064 S. Dutton Road, Beecher

Hours: Wednesday-Sunday 10 a.m.-4 p.m., Closed Monday & Tuesday

Sugar Creek Administration Center • 815-727-8700

17540 W. Laraway Road, Joliet

Hours: Monday-Friday 8 a.m.-4 p.m.

Welcome to Woods Walk 2025

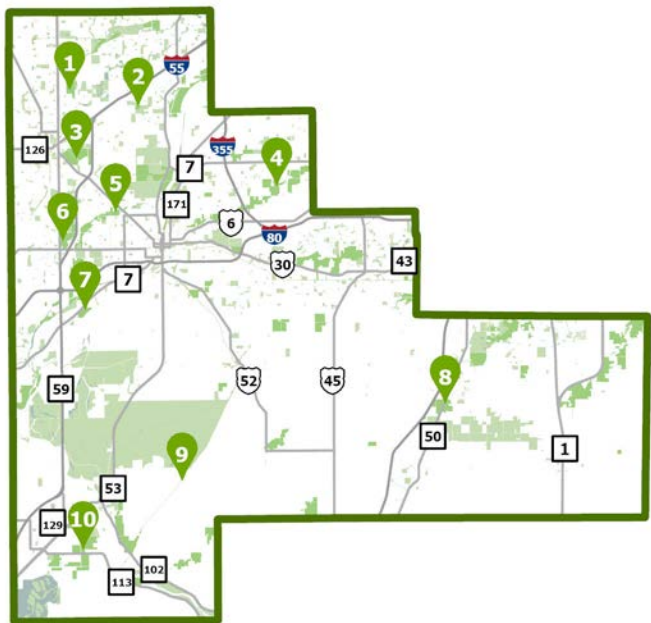


Woods Walk returns with another showcase of 10 Forest Preserve District of Will County trails for our residents and neighbors to enjoy in the beauty of fall!

Hike seven or more of the selected routes between September 1 and November 30 and then submit your log by December 7 to earn your 2025 collector's medal. Look for signs at trailheads to guide you.

Preserves and trails sometimes temporarily close for routine management, utility work, or weather event cleanup. For up-to-date information on preserve access and detailed preserve maps, please visit ReconnectWithNature.org.

2025 Woods Walk Locations



Pins show start of Woods Walk routes. See opposing page for preserves, trail names and route mileages.

1 Riverview Farmstead Preserve

DuPage River Trail • 1.5 miles

2 O'Hara Woods Preserve

O'Hara Woods Trail • 2.75 miles

3 Lake Renwick Heron Rookery Nature Preserve

Heron Rookery Trail & Lake Renwick Bikeway • 2.5 miles

4 Messenger Woods Nature Preserve

North Loop Trail & South Loop Trail • 2 miles

5 Theodore Marsh

Rock Run Greenway Trail & Theodore Marsh Trail • 2 miles

6 Hammel Woods – Route 59 Access

DuPage River Trail • 2.5-3 miles

7 Rock Run Rookery Preserve

Rock Run Rookery Trail • 1 mile

8 Raccoon Grove Nature Preserve

Raccoon Grove Nature Trail • 0.5 mile

9 Wauponsee Glacial Trail – Symerton Access

Wauponsee Glacial Trail • 1.25 miles

10 Kankakee Sands Preserve

Kankakee Sands Trail • 3 miles

Woods Walk is made possible
with support from the:



Protect Nature. Inspire Discovery. Bring People and Nature Together.



GIVING YOU

more of what you love from the

Forest Preserve District of Will County!

To make a gift today, visit
WillCountyNature.org

To Get Started...

Choose your method to log your walks:

**2025 Woods Walk
Hiking Guide**

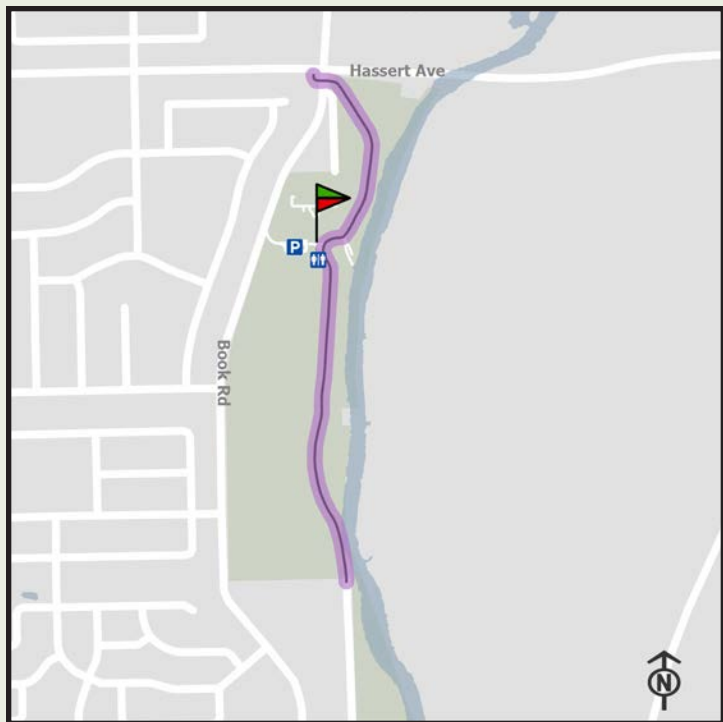
or

**Goosechase
smartphone app**

If using this guide, track your walks on the booklet's back page and follow the instructions to claim your collector's medal.

If using the Goosechase smartphone app:

- 1** Download the app for iOS or Android and sign up for a free account. Search for Will County Woods Walk Challenge on the Goosechase app and join.
- 2** On each hike, open the corresponding mission and watch for signs to "check in" on the app. Ensure your GPS permissions are on and complete one check-in per hike at the check-in sign.
- 3** When you've checked in for seven or more hikes, complete the mission "Claim my medal" and follow the instructions at the link provided.



DuPage River Trail

Riverview Farmstead Preserve

Surface type: Asphalt

Woods Walk route round trip: 1.5 miles



Riverview Farmstead Preserve

Location

Riverview Farmstead Preserve is located on Book Road, south of Hassert Boulevard/111th Street, in Naperville.

Notable Features

The 388-acre Riverview Farmstead Preserve was acquired between 1994 and 2012. The preserve is part of the DuPage River preservation system, which conserves more than 1,500 acres.

Prior to the District's acquisition of the land, it was the site of a farmstead settled and built by the Clow family in the 1800s. Cultural resources protected at the preserve include a mid-1800s limestone house, an early frame residence that had been converted to a barn, and a large timber frame barn.

Riverview Farmstead Preserve protects prairie habitat and a portion of the DuPage River.

Wildlife found at the preserve includes the big brown bat, osprey, Bell's vireo and dickcissels. The preserve is also home to more than 500 plant species.



O'Hara Woods Trail

O'Hara Woods Preserve

Surface type: Asphalt & natural turf
Woods Walk route round trip: 2.75 miles

O'Hara Woods Preserve

Location

O'Hara Woods Preserve is located north of Romeo Road and east of Weber Road in Romeoville.

Notable Features

The 54-acre O'Hara Woods Preserve was acquired between 2006 and 2008. The preserve is part of the Lily Cache Creek preservation system, which conserves approximately 1,000 acres.

O'Hara Woods Preserve protects forest and wetland habitat and a portion of Lily Cache Slough.

The preserve features 0.67 mile of paved, boardwalk and natural surface trail, ideal for hiking/running and snowshoeing. It is adjacent to the Village of Romeoville's O'Hara Woods Nature Preserve and connects to trails owned by the Village of Romeoville, which may be accessed from the Village's Conservation Park or Village Park.

Dogs are not allowed in parts of this preserve, so please leave your pets at home for this walk.



Heron Rookery Trail & Lake Renwick Bikeway

***Lake Renwick Heron Rookery Nature Preserve/
Lake Renwick Preserve***

Surface type: Limestone & asphalt
Woods Walk route round trip: 2.5 miles



Lake Renwick Preserve

Location

Lake Renwick Heron Rookery Nature Preserve is located on Renwick Road, east of Route 30/Lincoln Highway, in Plainfield.

Notable Features

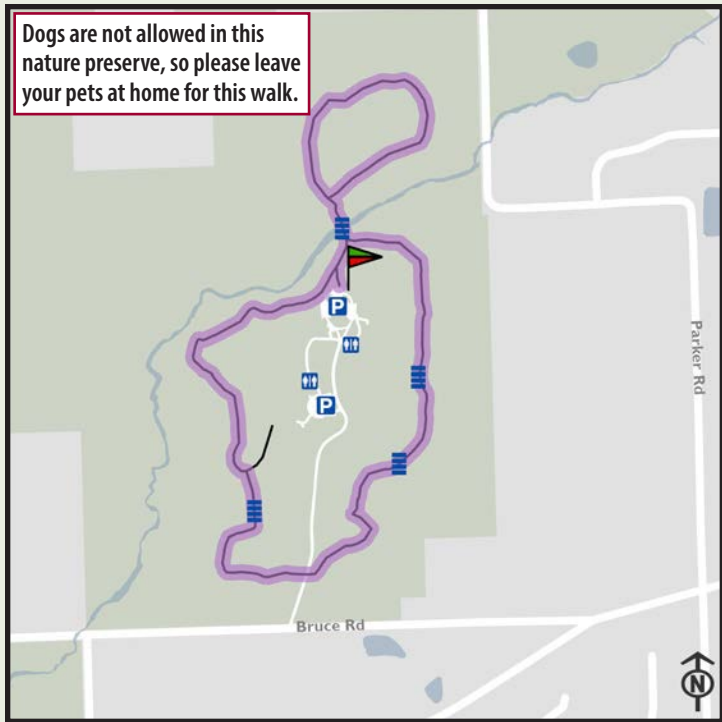
The 839-acre Lake Renwick Preserve was acquired between 1989 and 2010. The preserve is part of the Lily Cache Creek preservation system, which conserves approximately 1,000 acres. The Heron Rookery Nature Preserve is one of three access points.

Wildlife found at the preserve includes a variety of bird species, such as the great blue heron and great egret. Structures have been built on islands within the lake to provide nesting opportunities for the birds.

Hundreds of people visit the Heron Rookery Nature Preserve each year to be dazzled by nesting herons, egrets and cormorants. Lake Renwick is also a hot spot for bald eagles, American white pelicans and hundreds of winter waterfowl.

The preserve is also home to a variety of plant species, including large-leaved pondweed and water stargrass.

Dogs are not allowed in this nature preserve, so please leave your pets at home for this walk.



North Loop Trail & South Loop Trail

Messenger Woods Nature Preserve

Surface type: Natural turf

Woods Walk route round trip: 2 miles



Messenger Woods Nature Preserve

Location

Messenger Woods Nature Preserve is located on Bruce Road, east of Cedar Road in Homer Glen.

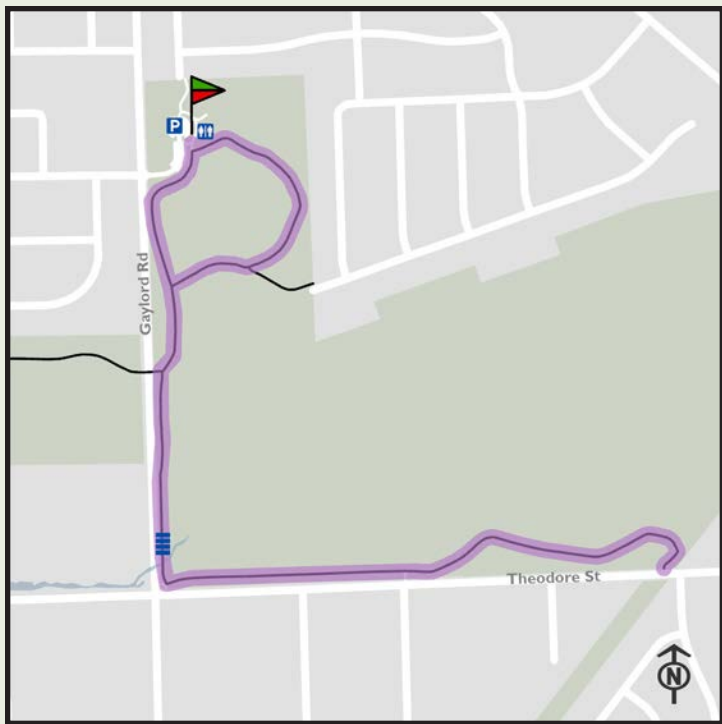
Notable Features

The 441-acre Messenger Woods Nature Preserve was acquired between 1930 and 2006. The preserve is part of the Spring Creek preservation system, which conserves more than 2,000 acres.

A 144-acre portion of this preserve was the District's very first acquisition, made in 1930. A 406-acre portion was dedicated as an Illinois Nature Preserve in 1994 and 1999.

Messenger Woods Nature Preserve protects a diversity of habitats, including forest, prairie, savanna, wetland and a portion of Spring Creek. Wildlife found at the preserve includes more than 60 bird species.

The preserve is also home to a variety of plant species, including a spectacular display of spring wildflowers, such as blue-eyed Mary, showy trillium, wild geranium and hepatica.



Rock Run Greenway Trail & Theodore Marsh Trail

Theodore Marsh

Surface type: Limestone & asphalt

Woods Walk route round trip: 2 miles



Theodore Marsh

Location

Theodore Marsh is located on Gaylord Road, north of Theodore Street, in Crest Hill.

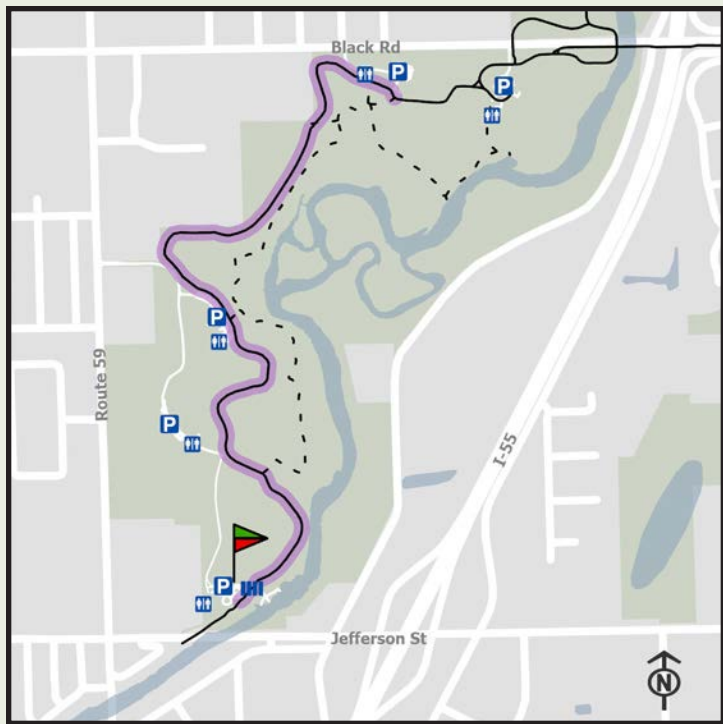
Notable Features

The 292-acre Theodore Marsh was acquired between 1994 and 2009. The preserve is part of the Rock Run preservation system, which conserves more than 1,450 acres.

A 140-acre portion of the site was registered as an Illinois Land and Water Reserve in 2003. This registration provides permanent protection for the preserve's natural resources.

Theodore Marsh protects a diversity of habitats, including forest, prairie, wetland and a portion of Rock Run.

Wildlife found at the preserve includes more than 100 bird species, such as the pie-billed grebe. The preserve is also home to a variety of plant species, including velvety white vervain, smooth blue aster and marsh bellflower.



DuPage River Trail

Hammel Woods – Route 59 Access

Surface type: Asphalt

Woods Walk route round trip: 2.5 miles

Hammel Woods – Route 59 Access

Location

Hammel Woods – Route 59 Access is located on Route 59, north of Route 52/Jefferson Street, in Shorewood.

Notable Features

Hammel Woods is part of the DuPage River preservation system, which conserves more than 1,500 acres. This 445-acre preserve has three access areas, all in Shorewood: Crumby Recreation Area, DuPage River Access and Route 59 Access.

The first 147 acres of Hammel Woods were the District's second and third acquisitions in 1930. The preserve is located at the site of the historic Grinton Mill and was named in honor of American soldiers who fought in the World War I battle in Hamel, France.

Hammel Woods protects forest and wetland habitats. Wildlife found at the preserve includes the long-tailed weasel and least weasel. The preserve is also home to a variety of plant species, including swamp thistle, bitternut hickory and white baneberry.



Rock Run Rookery Trail

Rock Run Rookery Preserve

Surface type: Asphalt

Woods Walk route round trip: 1 mile



Rock Run Rookery Preserve

Location

Rock Run Rookery Preserve is located on Youngs Road, south of Route 6/Eames Street, in Joliet.

Notable Features

The 224-acre Rock Run Rookery Preserve was acquired between 2002 and 2011. The preserve is part of the Rock Run preservation system, which conserves more than 1,450 acres.

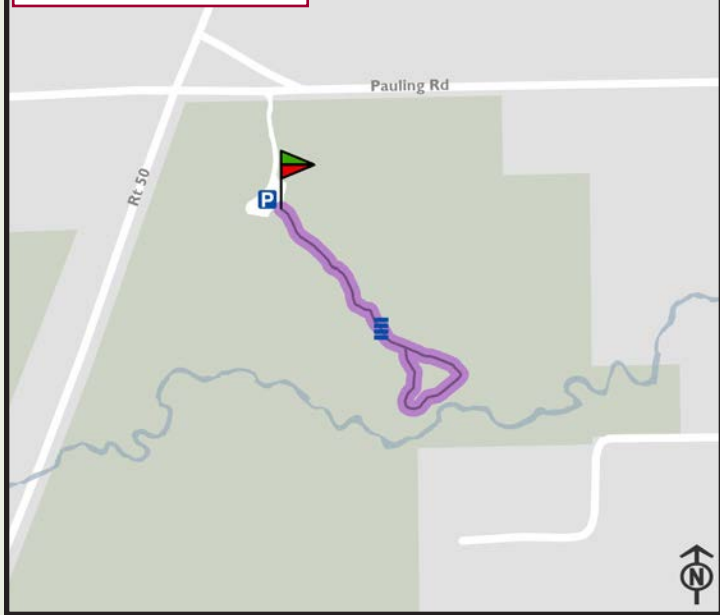
Prior to the District's acquisition of the land, its two lakes were created and used for quarrying.

Rock Run Rookery protects a diversity of habitats, including forest, wetland, an 84-acre lake and a 13-acre lake.

Wildlife found at the preserve includes a variety of bird species, including the great blue heron and great egret. Islands within the west lake provide nesting opportunities for the birds.

The preserve is also home to a variety of plant species, including marbleseed, pale beardtongue and sedges.

Dogs are not allowed in this nature preserve, so please leave your pets at home for this walk.



Raccoon Grove Nature Trail

Raccoon Grove Nature Preserve

Surface type: Natural turf

Woods Walk route round trip: 0.5 mile

Raccoon Grove Nature Preserve

Location

Raccoon Grove Nature Preserve is located on Pauling Road, east of Route 50/Governors Highway, in Monee Township.

Notable Features

The 213-acre Raccoon Grove Nature Preserve was acquired between 1937 and 1992. The preserve is part of the Rock Creek preservation system, which conserves more than 460 acres.

Raccoon Grove Nature Preserve protects a diversity of habitats, including forest, prairie, savanna, wetland and a portion of Rock Creek. Wildlife found at the preserve includes the tiger salamander and more than 80 bird species, including the scarlet tanager and eastern wood-pewee.

The preserve is also home to a variety of plant species, including white, bur and black oak, shagbark hickory and sugar maple trees. It also features a spectacular display of spring wildflowers, such as blue-eyed Mary and Virginia bluebell.



Wauponsee Glacial Trail

Wauponsee Glacial Trail – Symerton Access

Surface type: Limestone

Woods Walk route round trip: 1.25 miles



Wauponsee Glacial Trail – Symerton Access

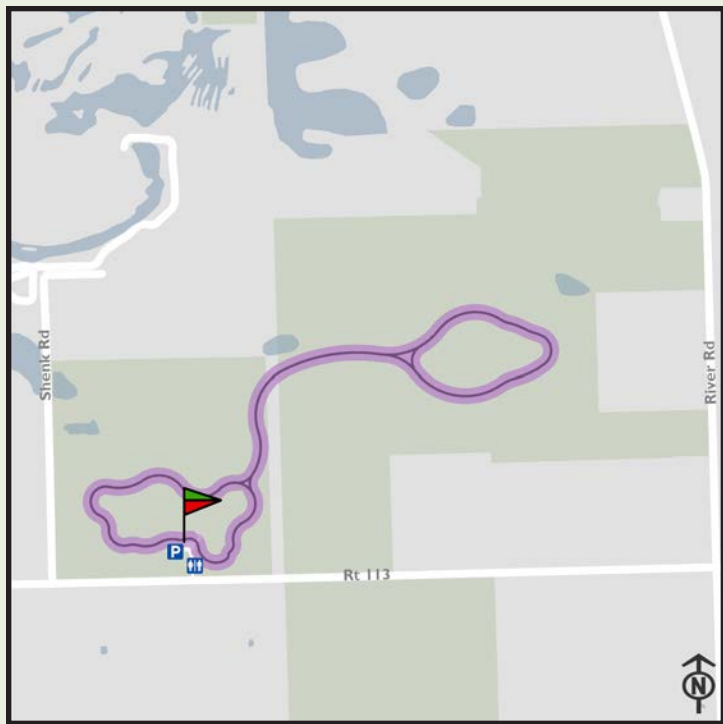
Location

The Wauponsee Glacial Trail – Symerton Access is located on Commercial Street, east of Symerton Road, in Wilmington

Notable Features

The 275-acre Wauponsee Glacial Trail was acquired between 2004 and 2016. Prior to the District's acquisition of the land, it was two abandoned railroads: Chicago, Milwaukee, St. Paul and Pacific from Joliet to Manhattan and the Wabash/Norfolk Southern from Manhattan to Custer Park.

The Wauponsee Glacial Trail is a 22.29-mile paved/crushed limestone linear trail consisting of two segments. The northern segment of the trail travels 2.80 miles from Sugar Creek Preserve north to Rowell Avenue in Joliet. This flat, paved segment of the trail travels through woodland, prairie and wetland. The southern segment of the trail extends an additional 19.49 miles from Sugar Creek Preserve south to the Kankakee River. This flat, crushed limestone segment of the trail travels through prairie.



Kankakee Sands Trail

Kankakee Sands Preserve

Surface type: Limestone

Woods Walk route round trip: 3 miles



Kankakee Sands Preserve

Location

Kankakee Sands Preserve is located north of Route 113 and west of West River Road in Custer Township.

Notable Features

The 555-acre Kankakee Sands Preserve was acquired between 1999 and 2012. The preserve is part of the Kankakee Sands preservation system, which conserves more than 1,200 acres.

Kankakee Sands Preserve protects savanna and wetland habitat.

A unique feature of the site is its sand dunes and savanna.

The preserve is home to a variety of plant species, including oaks, prickly pear cactus, rattlesnake master, purple false foxglove and prairie blazing star.



Souvenirs from the Silurian Sea:

Fossils of Will County

Greetings from Isle a la Cache, where you will time travel for a prehistoric adventure! Hundreds of millions of years ago our area was covered by a shallow sea. Discover the wildlife that called Will County home and view these creatures from the past through the souvenirs they left us – fossils.

"Souvenirs from the Silurian Sea" is a free naturalist-created exhibit that leaves visitors with an experience to write home about – a rare chance to see fossils from the Isle a la Cache Museum collection and a deeper dive into life before us. This exhibit is made possible with the support of The Nature Foundation of Will County.

SEPT. 03–NOV. 30

Isle a la Cache Museum,
501 E. 135th Street, Romeoville

Interested in Volunteering?

What Type of Volunteer Are You?

Public Offered Volunteer

- Shorter-term commitments
- Limited options available
- Waiver good for calendar year
- For a list of current volunteer opportunities, please email VolunteerServices@fpdwc.org.

Prairie People Volunteer

- Longer-term commitments
- Complete an application
- Background check
- Orientation and additional trainings



Waiver



Application

For more information, visit ReconnectWithNature.org

SHOP OUR MERCH

IT'S MORE THAN A BRAND. IT'S A CAUSE.



OutsiderThreads.com

All proceeds go to fund conservation, land restoration and nature education initiatives.

To receive your Woods Walk collector's medal, visit one of the Forest Preserve visitor centers with this completed form or fill out this form and mail it to:

Woods Walk
c/o Sugar Creek Administration Center
17540 W. Laraway Road
Joliet, IL 60433

Name_____

Address_____

Email_____

Please check the trails you hiked:

- ☐ 1. Riverview Farmstead Preserve • DuPage River Trail
- ☐ 2. O'Hara Woods Preserve • O'Hara Woods Trail
- ☐ 3. Lake Renwick Heron Rookery Nature Preserve • Heron Rookery Trail
& Lake Renwick Bikeway
- ☐ 4. Messenger Woods Nature Preserve • North Loop Trail & South Loop Trail
- ☐ 5. Theodore Marsh • Rock Run Greenway Trail & Theodore Marsh Trail
- ☐ 6. Hammel Woods–Route 59 Access • DuPage River Trail
- ☐ 7. Rock Run Rookery Preserve • Rock Run Rookery Trail
- ☐ 8. Raccoon Grove Nature Preserve • Raccoon Grove Nature Trail
- ☐ 9. Wauponsee Glacial Trail–Symerton Access • Wauponsee Glacial Trail
- ☐ 10. Kankakee Sands Preserve • Kankakee Sands Trail

**Always practice commonsense safety and
remember good trail etiquette in the preserves.
In case of an emergency, call 911.
For non-emergencies, contact Forest Preserve
police at 815-727-6191, option 9.**

Preserve hours 8 a.m. to sunset

ReconnectWithNature.org



In providing programs and services to the public the Forest Preserve District will make reasonable modifications to ensure that all people have an equal opportunity to enjoy District offerings. For more information, visit ReconnectWithNature.org/ADA.

FOREST PRESERVE DISTRICT
WILL COUNTY

Bringing People and Nature Together

